



# MONTHLY MEMBERSHIP PROGRESS REPORT

District 321B1

Results as of: 05/31/2018

GMT: ANIL TULSYAN

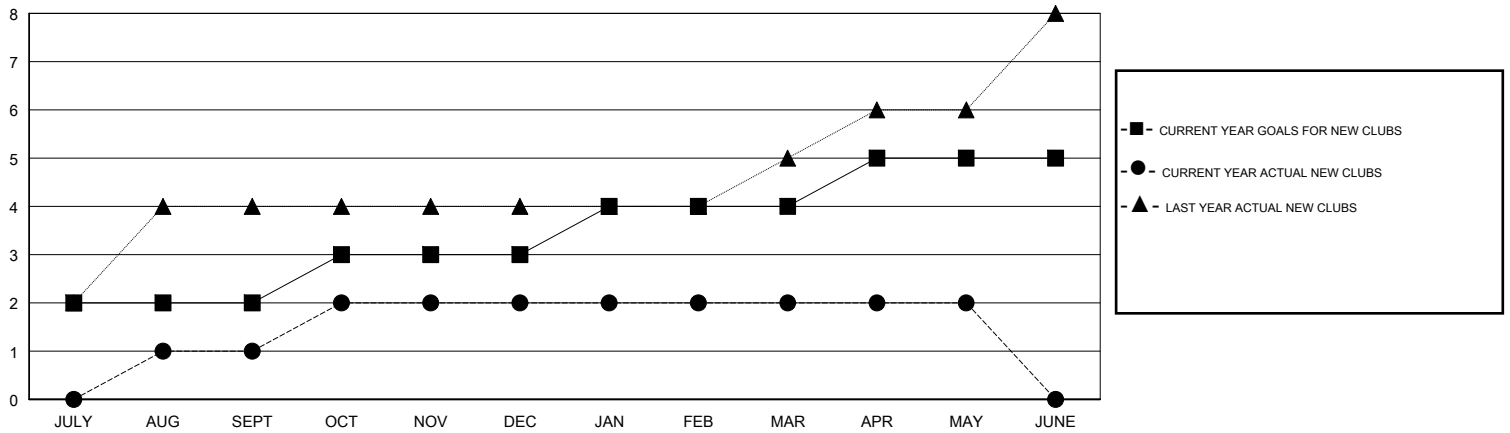
LOCATION INDIA

GMT CA

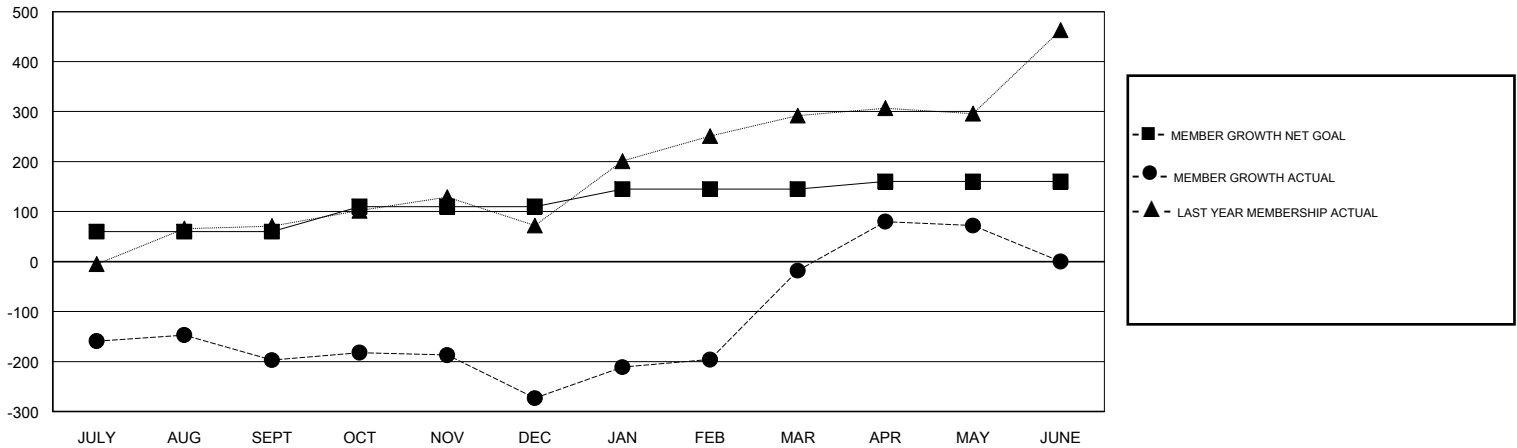
Clubs			
RESULTS FOR 2017-2018			
QUARTER	NEW CLUB GOAL	NEW CLUBS	DROPPED CLUBS
JULY/AUG/SEPT	2	1	0
OCT/NOV/DEC	1	1	5
JAN/FEB/MAR	1	0	0
APR/MAY/JUNE	1	0	0

Members			
RESULTS FOR 2017-2018			
QUARTER	MEMBER GROWTH NET GOAL	MEMBER GROWTH ACTUAL	DROPPED MEMBERS ACTUAL (including transfers)
JULY/AUG/SEPT	60	52	243
OCT/NOV/DEC	50	68	126
JAN/FEB/MAR	35	342	15
APR/MAY/JUNE	15	154	53

GOALS AND ACTUAL NEW CLUBS CUMULATIVE



GOALS AND ACTUAL MEMBERS CUMULATIVE



DROPPED CLUBS: 5	53 CLUBS OF 87 ADDED 1 OR MORE NEW MEMBERS  <a href="#">CLICK HERE FOR CUMULATIVE MEMBERSHIP DATA</a>	<u>GENDER DISTRIBUTION</u>	
DROPPED MEMBERS		MALE	1,712 (57.76%)
DECEASED	6	FEMALE	1,252 (42.24%)
CLUB CANCELLED	83	Women Percentage Fiscal Year Goal: 40%	
OTHER	348	TOTAL FAMILY UNIT MEMBERS	1,764
TOTAL	437	FAMILY MEMBERS PAYING HALF DUES	946